

Introducing Hindpool & Cornerhouse Retail Parks, Barrow-in-Furness

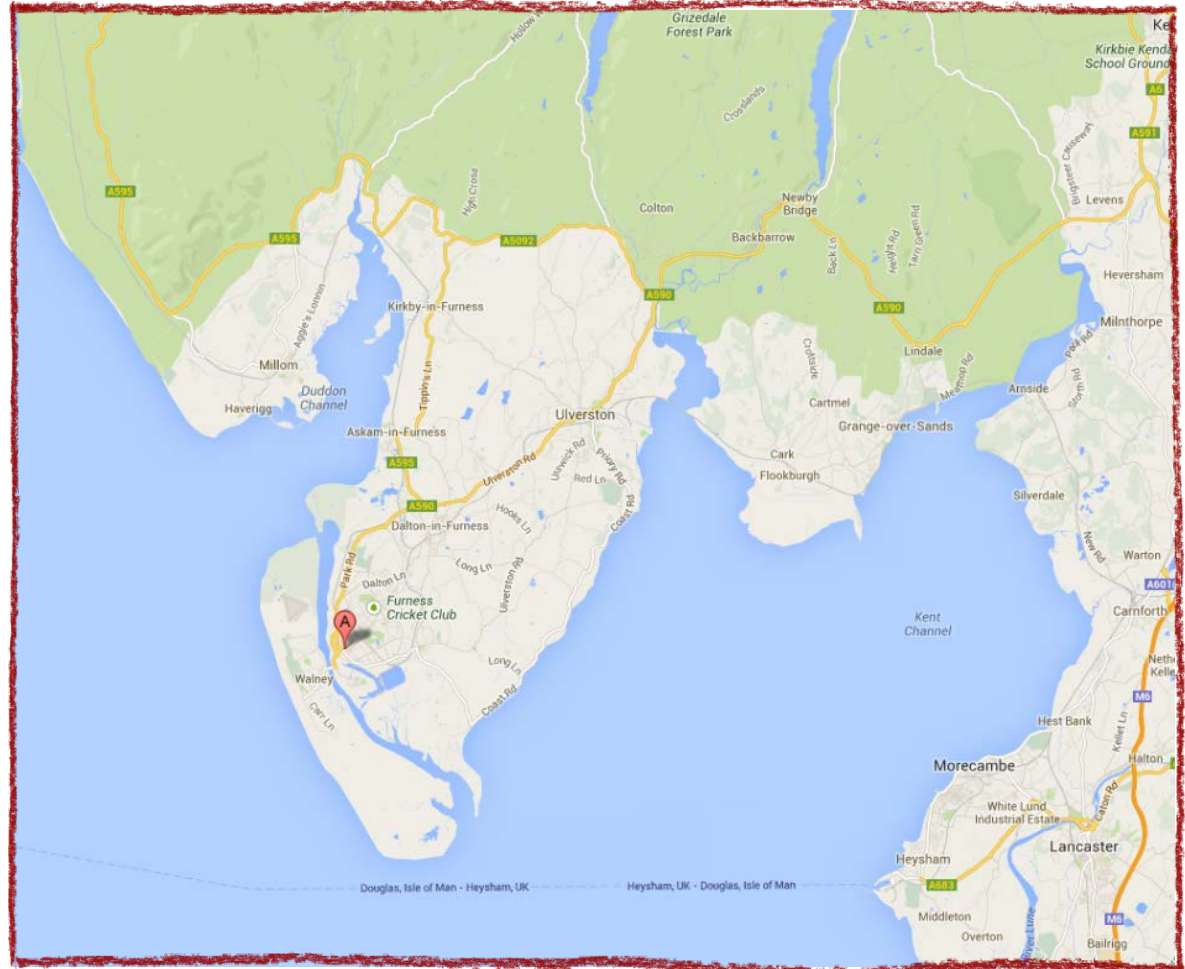


The Location

Hindpool & Cornerhouse Retail Parks

Situated **0.25 miles** west of **Barrow-in-Furness** town centre in the **North West** of England. **Prominent position** on the **A5087** Hindpool Rd.

£300m+ construction spend planned by **BAE Systems** in Barrow over next 8 years to prepare for the next generation of nuclear submarine. BAE will **double its workforce**, creating **3,000 new long-term jobs** in Barrow between 2011 & 2036



The Schemes

Hindpool & Cornerhouse Retail Parks

133,000 sq ft

retail park in total (ground floor)



3 m

estimated
annual visitors
(excluding Tesco)



free parking spaces



Extended opening
hours to

8 pm



12

retail &
leisure
units

The Scheme Plan: Cornerhouse

Hindpool & Cornerhouse Retail Parks

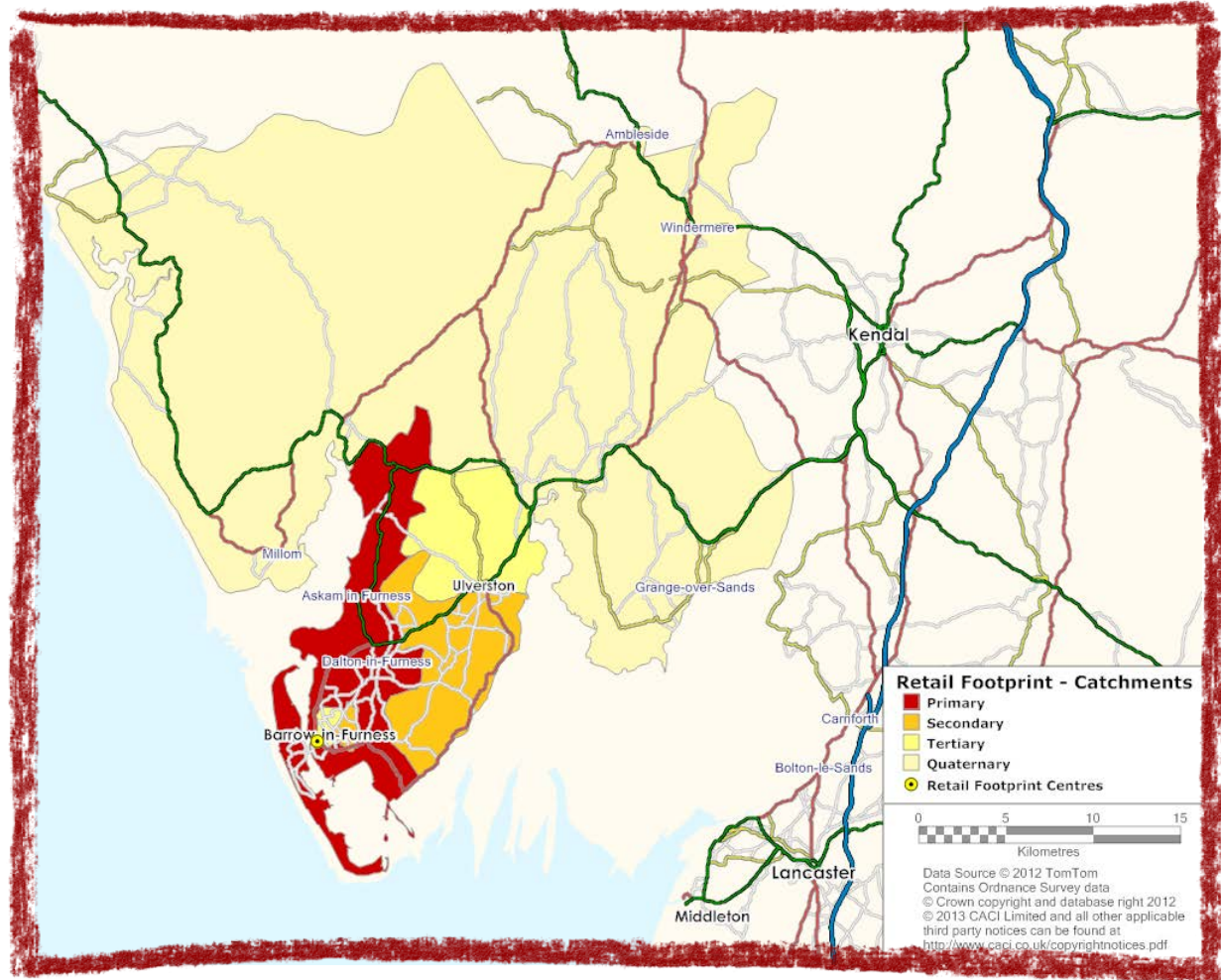


11/2013

£89m physical
+ **£19m** online
comparison goods
spend potential

124K population
coverage – a
captive audience
with very low
leakage

39% market
share, rising to
55% in the core
catchment

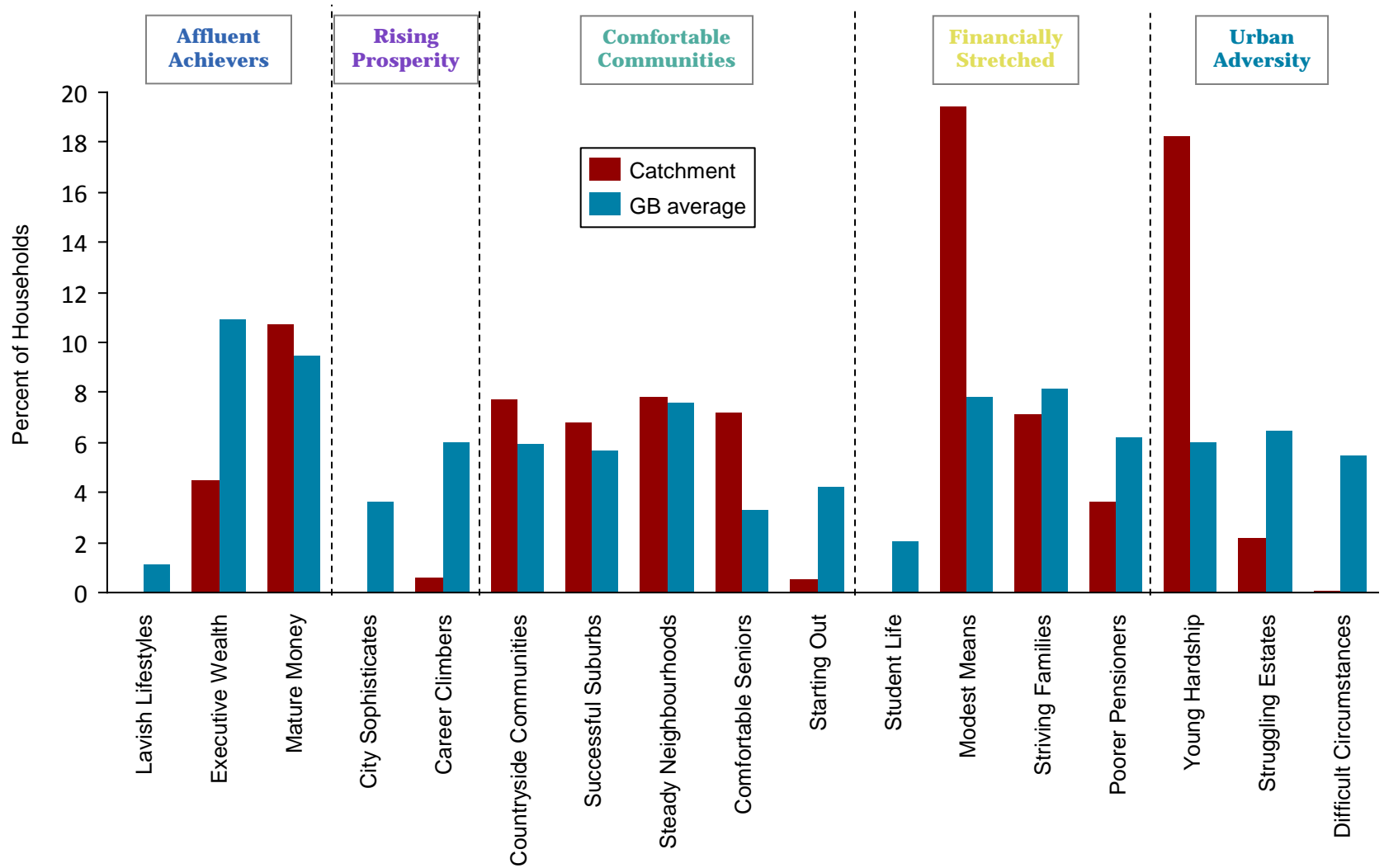


Source: CACI Retail Footprint 2013

© The British Land Company PLC 2014

The ACORN profile

Hindpool & Cornerhouse Retail Parks



Source: CACI Retail Footprint 2013

© The British Land Company PLC 2014

The Retailers

Hindpool & Cornerhouse Retail Parks





Ed Cree

0207 467 3490

edward.cree@britishland.com



Dominic Rodbourne

0207 409 9945

drodbourne@savills.com